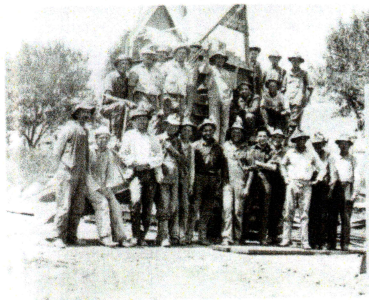
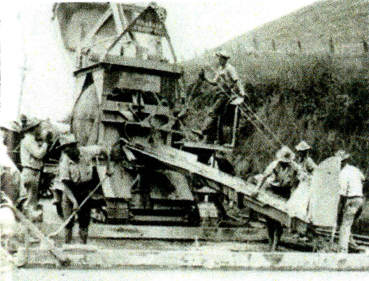


Cal Contractor

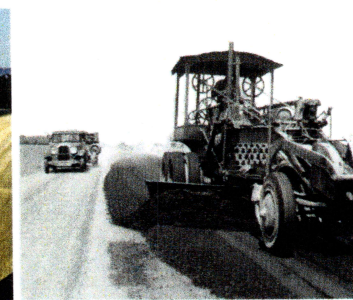
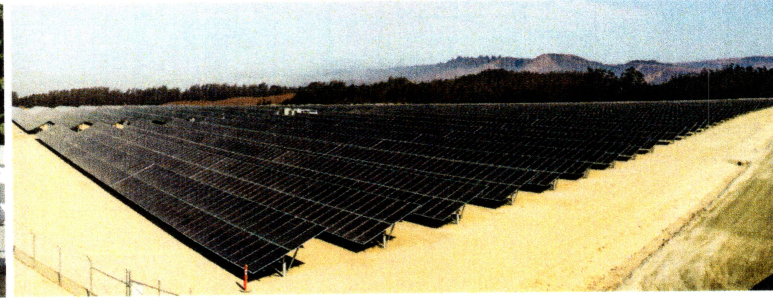
Issue 5 - 2025

MAGAZINE

www.calcontractor.com



Graniterock Celebrates 125 Years of Service to California's Construction Industry



PRE-SORT STD.
U.S. Postage
PAID
Tucson, AZ
Permit #271

MCGUIRE HESTER

By Brian Hoover / Photos provided by McGuire and Hester

McGuire and Hester Completes Grading, Paving and Other Infrastructure Work on Veterans Home Skilled Nursing Facility in Napa Valley

McGuire and Hester recently completed extensive site infrastructure work at the new Skilled Nursing and Memory Care Facility at the Veterans Home of California-Yountville in Napa County. The Alameda-based construction firm, with field offices in Oakland and Sacramento, performed grading, paving, excavation, concrete work, and underground utility installation as part of this major state-funded project.

The new 240-bed facility at Yountville, scheduled to open in mid-2025, is part of a larger \$278 million modernization effort replacing the existing Holderman Hospital and Franklin D. Roosevelt Building. Spanning approximately 317,000 square feet, the multi-story building will provide long-term skilled nursing and memory care for veterans, particularly those with dementia, Alzheimer's, and traumatic brain injuries. The construction and design by CannonDesign, the project's

architect, specifically incorporate features such as natural lighting, single-occupancy rooms with en-suite restrooms, and accessible common areas tailored to veterans' specialized healthcare needs.

McGuire and Hester worked under the prime design-build contractor Rudolph and Sletten, a subsidiary of Tutor Perini Corporation. Rudolph and Sletten was awarded a design-build contract valued at approximately \$269 million by the California Department of General Services





Above: McGuire & Hester using their Cat 1055F paver to place the first lift for the drive aisle to the central utility plant of the new skilled nursing facility in Napa Valley.

Right: Top lifting the main entrance to the patient drop off area.



(DGS), representing the California Department of Veterans Affairs (CalVet). This major development supports California's obligation to care for veterans, as the state has the largest population of veterans in the nation.

The firm managed significant earthwork in their cut and fill operations, moving approximately 50,000 to 60,000 cubic yards of dirt. McGuire and Hester also handled all of the grading and paving tasks for the new facility, including the installation of a new 166,000-square-foot parking lot area. Infrastructure installed by McGuire and Hester included domestic water lines, fire hydrants, sewer lines, a pump station, storm drains, steam, and gas utilities.

Kyle Carone, Grading and Paving Division Manager for McGuire and Hester, described the complexity of the terrain at the site, stating, "The old parking lot was at elevation 213, and we cut it

down to elevation 135. The existing parking lot was on a steep slope that ran down into the campus area. We executed a two-step earthwork process that involved the installation of 6-foot to 15-foot-high retaining walls with tiebacks to support the hillside. Most of the earth was moved with scrapers, excavators and haul trucks for the cut and fill operations. We also installed keyways and perforated pipe for proper drainage."

Pete Lambert, General Paving Superintendent, emphasized the logistical challenges of coordinating with various trades, including electrical, plumbing, steel, framing, and other construction specialists. "Space was tight and limited due to numerous trades working simultaneously. A carefully organized schedule allowed us

to effectively manage paving operations," Lambert explained. "An amazing thing happened when the time came for the asphalt paving operations. All of the cars and equipment were removed and the trade crews were brought to the site via shuttle vans from another parking lot area. Rudolph and Sletten went to great lengths to move shipping containers and other supplies so that our 13-person crew would have plenty of room to operate during the placement of both lifts performed months apart over a total paving period of 12 days."

The paving process occurred in two distinct phases to accommodate project timelines and site conditions, but first the pavement from the previous parking lot needed to be milled off by subcontractor, Anrak



Left: McGuire and Hester's paving crew on site at the Skilled Nursing and Memory Care Facility at the Veterans Home of California-Yountville in Napa County.

Bottom: Finish rolling the lower parking lot area at the Veterans Home of California-Yountville in Napa County.

Corporation. Next, McGuire and Hester crew members placed and compacted eight inches of Type 2 aggregate base layer. Then, Griffin Soil performed lime treatment on the parking lot site. This was followed by the installation of the first 2-inch lift of hot mix asphalt, completed in the middle of the COVID outbreak. "This first 2-inch lift was placed well before the second to allow for runoff and prevent water from accumulating on the pavement surface," says Lambert. "We returned to the site recently to complete the paving process and put down the top 2-inch lift. The entire paving process required around 4,000 tons of 6410 hot mix asphalt provided

by Vulcan Materials. We utilized our Cat 1055F paving machine for a smooth and precise asphalt application." Throughout construction, McGuire and Hester demonstrated a commitment to sustainable practices including trucking the asphalt spoils to the nearest Vulcan plant for recycling.

The Veterans Home of California-Yountville, established in 1884, is the largest veterans' home in the United States, accommodating nearly 1,000 veterans and spouses. The sprawling 615-acre campus provides comprehensive care and a vibrant community environment. The new skilled nursing facility occupies

approximately 11 acres of this historic site and will significantly enhance the quality of care available.

Both Carone and Lambert highlighted the project's profound impact on veterans residing at the home. "Many veterans watched daily, proudly wearing hats signifying their military branch and service theater," Carone noted. "It was rewarding to interact with them and answer their many questions."

Lambert echoed this sentiment, remarking on the inspirational nature of the project site, which prominently featured a plethora of American and other flags from around the world. "It was impressive and motivating to contribute

[Continued on page 20]



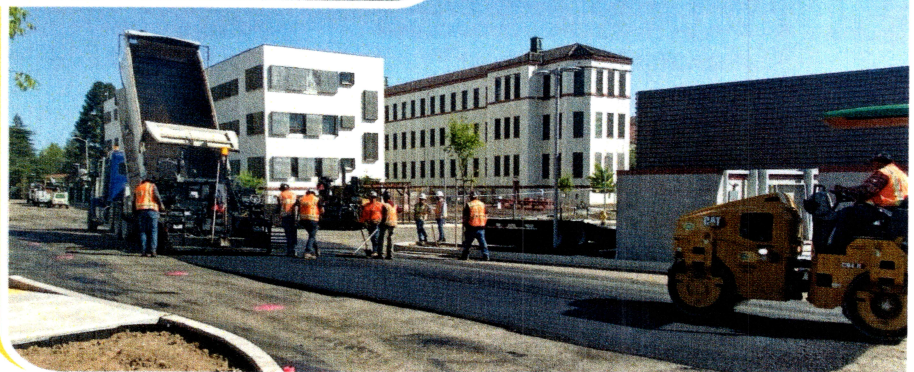


Above: McGuire & Hester crew paving and compacting the employee parking lot near the loading dock.



Above: Performing digout repairs on main drive isle of the existing main road of the Veterans Home facility.

Right: Performing base repair prior to top lifting the drive aisle.



[Continued from page 18]

something meaningful for these veterans who have sacrificed so much for our country," he said.

Additional subcontractors who collaborated on this complex project included Sierra Traffic Markings (striping), Pacific Northwest Oil, and Plus Sweeping. Nick Lambert served as the paving foreman for McGuire and Hester, leading a dedicated 13-person paving crew.

Designed to achieve LEED Gold standards, the new skilled nursing and memory care facility at the Veterans Home of California-Yountville represents a significant

step forward in veteran healthcare. With completion anticipated by mid-2025, this state-of-the-art facility will ensure modern, efficient, and dignified living conditions for veterans who have honorably served this nation.

Established in 1926, McGuire and Hester specializes in grading, paving, landscaping, concrete services, and underground utilities. The company has significantly contributed to Northern California's infrastructure development, recognized for its innovation, safety, and sustainability practices. Known for successfully delivering

complex projects ranging from commercial developments to public works improvements, McGuire and Hester has earned numerous awards and maintained enduring collaborations with municipalities, developers, and industry partners. McGuire and Hester is headquartered in Alameda with field offices in Oakland and Sacramento. For more information, please visit www.mcguireandhester.com or call (510) 632-7676. The CalVet website can be seen at www.calvet.ca.gov. **Cc**